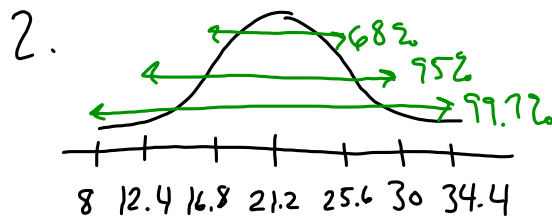
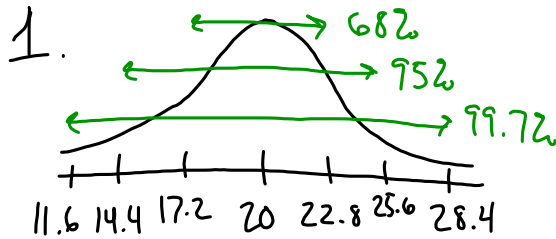


Normal Practice I Worksheet:



3. normal cdf $(-99, 13) = 1$

lower z, upper z

↑
this is NOT a z-score!

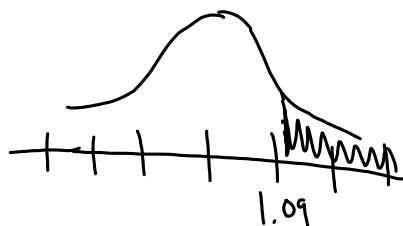
$$z = \frac{y - \mu}{\sigma} = \frac{13 - 21.2}{4.4} = -1.86$$

$$\text{normalcdf}(-99, -1.86) = .0314 = 3.14\%$$

↑ use this to approximate $-\infty$

$$4. z = \frac{y - \mu}{\sigma} = \frac{26 - 21.2}{4.4} = 1.09$$

$$\text{normalcdf}(1.09, 99) = 0.138 = 13.8\%$$



$$5. \quad z = \frac{25 - 21.2}{4.4} = 0.86$$

$$z = \frac{30 - 21.2}{4.4} = 2.0$$

$$\text{normalcdf}(.86, 2.0) = .172 = 17.2\%$$

$$6. \quad z = \frac{Y - \mu}{\sigma} = \frac{26 - 21.2}{4.4} = 1.09$$

$$\text{normalcdf}(-99, 1.09) = .862 = 86.2\%$$